



DOORKNOBS

54 Meadow Road, Rusthall, TN4 8UL
£490,000



54 Meadow Road, Rusthall, TN4 8UL

£490,000

Doorknobs is delighted to present this charming three-bedroom detached cottage, situated in the picturesque 'Rusthall' village. The property offers a perfect blend of character and modernity, featuring original details such as feature fireplaces and stained glass windows, alongside contemporary updates in the kitchen and bathroom.



Location

Meadow Road is set within the heart of Rusthall, within walking distance of the village, with its good range of local amenities, including a post office, general stores, public houses and churches. Should you ever want to leave Rusthall, the property is located less two miles west of Tunbridge Wells town centre. There is also a bus service from Rusthall that departs every fifteen minutes during peak times and a London commuter bus stop is at the top of the road. Tunbridge Wells Town Centre boasts an abundance of fantastic bars, restaurants, and cafes as well as a number of shops and highly rated Secondary Schools. Walks can be enjoyed across the surrounding countryside towards Speldhurst and into the main town of Tunbridge Wells.

Description

Upon entering, a small entrance hall that leads into both the living room and dining room. The living room is spacious and inviting, with a bay window overlooking the side garden, a beautiful feature fireplace and neutral décor that complements the cottage's timeless appeal.

The dining room is similarly generous in size, with a window facing the front of the property, another feature fireplace and an understairs storage cupboard. From the dining room, you move into the kitchen.

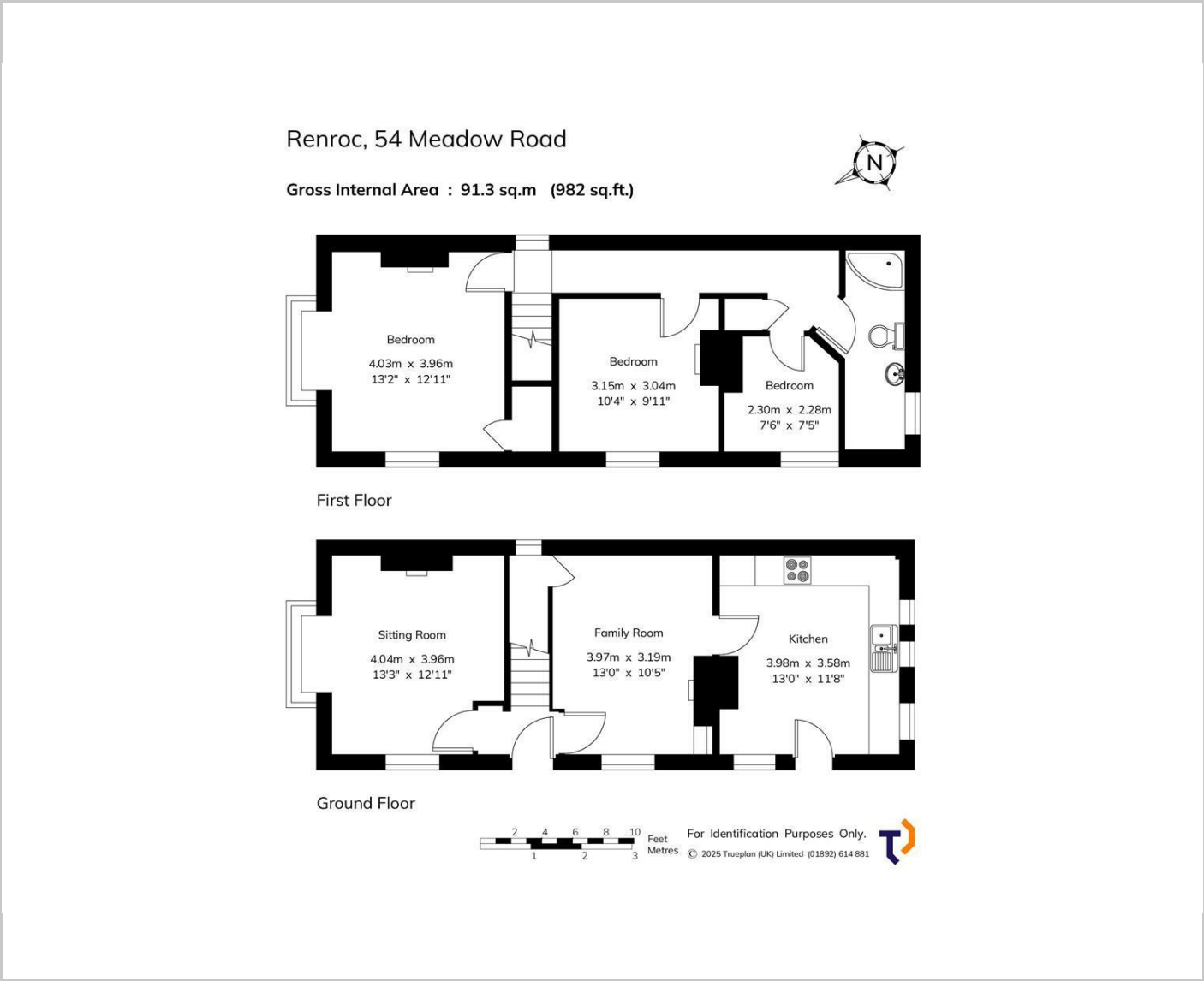
The kitchen has been thoughtfully modernized, with a range of cream wall and floor units, paired with a stylish grey granite-effect worktop. It comes fully equipped with an oven and electric hob, fridge/freezer, washing machine, and dishwasher. A door leads directly into the private rear garden.

Upstairs, the property offers three bedrooms, two doubles and a smaller single bedroom, each beautifully decorated in neutral tones. The master bedroom features a large built-in wardrobe. The bathroom has been updated with a contemporary white suite, including a bath with a shower overhead, hand basin, and W.C. The walls are partially tiled, with full tiling around the bath, and a window allows plenty of natural light.

Externally, the property boasts a private rear garden, predominantly laid to lawn with a small patio area, providing a peaceful outdoor space. On-road parking is available.



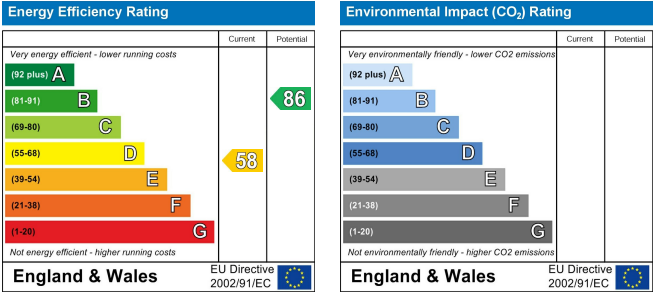
Floor Plans



Area Map



Energy Performance Graph



These particulars, whilst believed to be accurate are set out as a general outline only for guidance and do not constitute any part of an offer or contract. Intending purchasers should not rely on them as statements of representation of fact, but must satisfy themselves by inspection or otherwise as to their accuracy. No person in this firms employment has the authority to make or give any representation or warranty in respect of the property.